



RGB POWER SUPPLY USER MANUAL



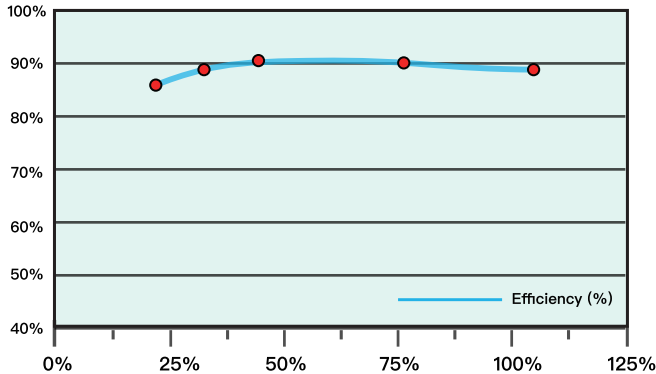
Introduction	1
Full Modular Connector Guideline	5
Installing Your New Power Supply	6
RGB Lighting & Smart fan control	9
DC Connector	10
Safety Information	12
Safety Certificate	13
What's in the Box	14
Warranty	16
After-Sales Service	17



Introduction

REDRAGON high performance RGB power supply is a very impressive product, offering incredible experience to all ambitious gamers who crave power and stability. It can be up to 90% or above efficiency on +12v rail and less than 0.5W standby power consuming. REDRAGON is the weapon helping you to be the No.1 player.

Efficiency of the Power Supply



Loading(% of Rated Output Power)



Active PFC

Adjust the current waveform to compensate for the phase difference between current and voltage. Active PFC can achieve a higher power factor.



Main Capacitor

Enhance the life of the power supply with high-quality capacitors, low resistance and excellent high efficiency.



Power Stabilization Scheme

Protect itself and other hardware through the LLC+DC-DC circuit scheme.



Low Noise Colorful RGB Fan

Achieve a perfect balance between in-game performance and silence with excellent heat dissipation and noise reduction.



100-240V Full Voltage

Provide sufficient and stable power for the CPU.





Durable Flat Cables

Durable flat cables give you neat and tidy cable management.

650W RGB POWER SUPPLY

FULL
MODULAR

RGPS-650W POWER SUPPLY



	AC Input	100-240Vac, 50-60Hz, 8Amax					
	DC Output	+5V	+3.3V	+12V	-12V	+5VSB	
	Current	20A	20A	54A	0.3A	2.5A	
	Max.Output wattage	100W		648W	3.6W	12.5W	
650W							

The 650W RGB power supply complies with Intel ATX 12V 2.3 & EPS 12V standards. It can reach up to 90% power efficiency and deliver up to 650W of power with a single+12V rail, which meets 80 PLUS GOLD Certification.

750W RGB POWER SUPPLY



RGPS-750W POWER SUPPLY



	AC Input	100-240Vac, 50-60Hz, 10A Max					
	DC Output	+5V	+3.3V	+12V	-12V	+5VSB	
	Current	20A	20A	62A	0.3A	2.5A	
	Max. Output wattage	100W		744W	3.6W	12.5W	
750W							

The 750W RGB power supply complies with Intel ATX 12V 2.3 & EPS 12V standards. It can reach up to 90% power efficiency and deliver up to 750W of power with a single +12V rail, which meets 80 PLUS GOLD Certification.

850W **RGB** POWER SUPPLY

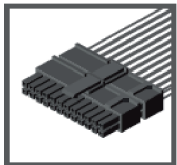
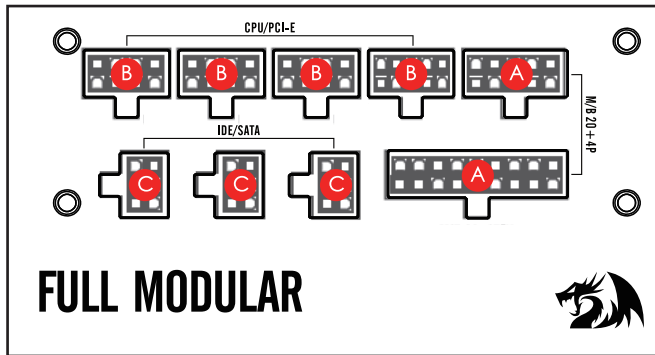
FULL
MODULAR

RGPS-850W POWER SUPPLY

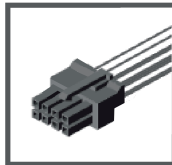
	AC Input	100-240Vac, 50-60Hz, 10A Max					
	DC Output	+5V	+3.3V	+12V	-12V	+5VSB	
	Current	20A	20A	70A	0.3A	2.5A	
	Max. Output wattage	100W		840W	3.6W	12.5W	
850W							

The 850W RGB power supply complies with Intel ATX 12V 2.3 & EPS 12V standards. It can reach up to 90% power efficiency and deliver up to 850W of power with a single+12V rail, which meets 80 PLUS GOLD Certification.

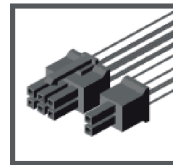
Full Modular Connector Guideline



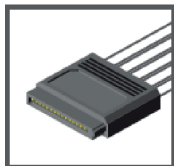
A / M/B 18+10 PIN



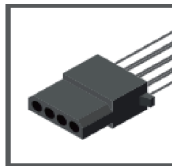
B / CPU(8PIN)



B / PCI-E(8PIN)



C / SATA(6PIN)



C / IDE(4PIN)

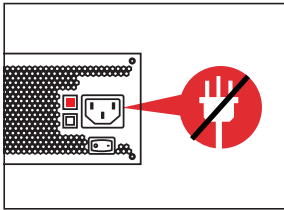
Installing Your New Power Supply

Step 1: Removing your existing power supply

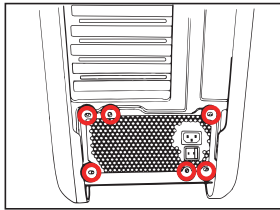
If you are building a new system, skip to **Step 2**

1. Disconnect the attached AC power cords.
2. Disconnect all the power cables from your video card, motherboard and all other peripherals.
3. Before uninstalling your existing power supply, please follow the directions in your chassis manual.
4. Proceed to **Step 2**.

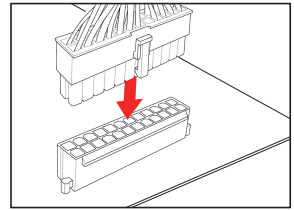
Step 2: Installing the REDDRAGON 850W RGB power supply



1. Make sure the attached AC power cable is not connected.

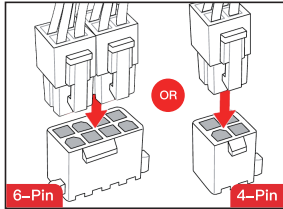


2. Follow the directions in your chassis manual and install the power supply with the screws.



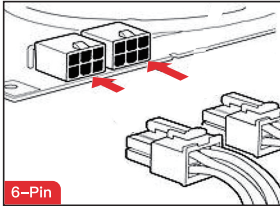
3. The main 24-pin power cable has a detachable 4-pin mechanism in order to support either a 24-pin or a 20-pin socket on the motherboard.

- A. If your motherboard has a 24-pin socket, you may connect the 24-pin main power cable from the power supply directly to your motherboard.
- B. If your motherboard has a 20-pin socket, you must detach the 4-pin cable from the 24-pin connector, and then plug the 20-pin cable onto your motherboard without connecting the 4-pin connector.



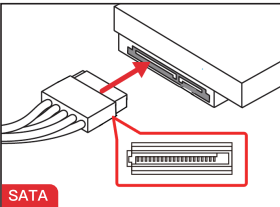
4. Connect the 8-pin +12V (EPS12V) cable to the motherboard.

- A. If your motherboard has an 8-pin +12V socket, connect the 8-pin cable directly to your motherboard.
- B. If your motherboard has a 4-pin socket, detach the 4-pin from the 8-pin cable, and then plug this 4-pin cable directly to your motherboard.



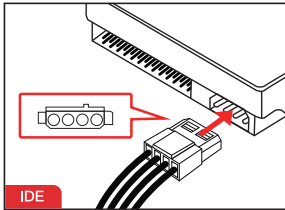
5. Connect the peripheral cables, PCI-Express cables.

- A. Connect the peripherals cables to your hard drive and CD-ROM/DVD-ROM power sockets.
- B. Connect the PCI-Express cables to the power sockets of your PCI-Express video cards if required.
- C. Connect the peripheral cables to any peripherals requiring a small 4-pin connector.

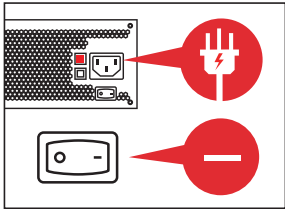


6. Connect the SATA cables.

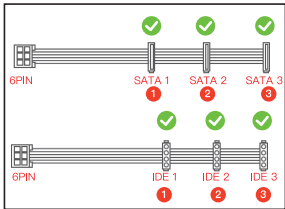
- A. Connect the SATA cables to your SATA SSD or hard drive's power sockets.
- B. Make sure all the cables are tightly connected. Be sure to save any unused modular cables for future component additions.



7. Connect the peripheral “Molex” IDE 4-pin connectors for fans, pumps, 3.5” hard drive, legacy components and other devices/ adapters.



8. Connect the AC power cord to the power supply and turn it on by pushing the switch to the ON position (marked with “I”).



Reminder

A. SATA cables (1 to 3) have 3 female connectors—SATA1, SATA2, SATA3.

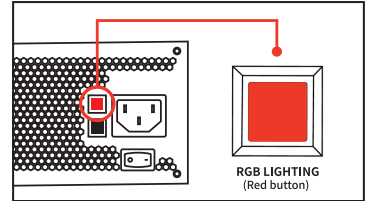
B. IDE cables (1 to 3) have 3 female connectors—IDE1, IDE2, IDE3.

Please use the appropriate connector according to the distance of your devices from the power supply.

RGB Lighting

1. RGB mode switch button on the back of the power supply.
2. Short press to turn on the light or switch the light mode.
3. Long press 1.5 seconds to turn off the light.

Note: This power supply is equipped with **Memory Function**. If the light is powered OFF, it will remember the mode you last use.

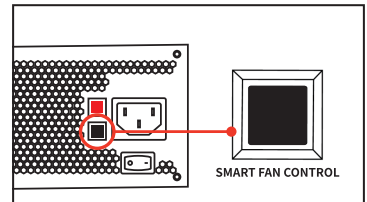


27 different lighting modes. Long press LED Off

1. Smart fan control switch button is on the back of the power supply.
2. Press the button to ↓ to turn off the smart fan control function. When not pressed, the button is ↑ and it will turn on the smart fan control function.

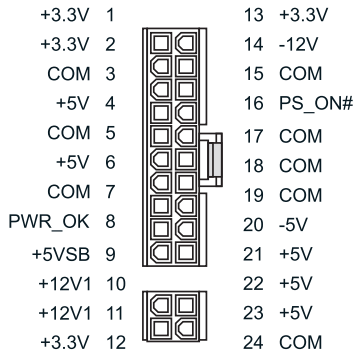


SMART FAN CONTROL



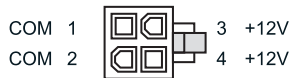
DC Conector

20+4PIN



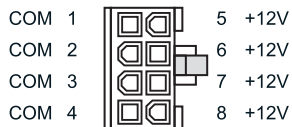
PIN	Description	PIN	Description
1	+3.3V	13	+3.3V
2	+3.3V	14	-12V
3	COM	15	COM
4	+5V	16	PS_ON#
5	COM	17	COM
6	+5V	18	COM
7	COM	19	COM
8	PWR_OK	20	-5V
9	+5VSB	21	+5V
10	+12V1	22	+5V
11	+12V1	23	+5V
12	+3.3V	24	COM

+12VP4



PIN	Description
1	COM
2	COM
3	+12VDC
4	+12VDC

+12VP8(4+4)



PIN	Description	PIN	Description
1	COM	5	+12V
2	COM	6	+12V
3	COM	7	+12V
4	COM	8	+12V

**All the data tested by laboratory

PCI-E P6



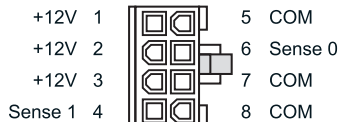
5 COM

6 COM

7 COM

PIN	Description	PIN	Description
1	+12V	4	COM
2	+12V	5	COM
3	+12V	6	COM

PCI-E -P8(6+2)



5 COM

6 Sense 0

7 COM

8 COM

PIN	Description	PIN	Description
1	+12V	5	COM
2	+12V	6	Sense 0
3	+12V	7	COM
4	Sense 1	8	COM

SATA

+3.3V

+3.3V

+3.3V

COM

COM

COM

+5V

+5V

+5V

COM

COM

COM

+12V

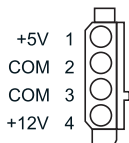
+12V

+12V



PIN	Description
1	+3.3V
2	COM
3	+5V
4	COM
5	+12V

IDE P4



PIN	Description
1	+5V
2	COM
3	COM
4	+12V






**All the data tested by laboratory

Safety Information

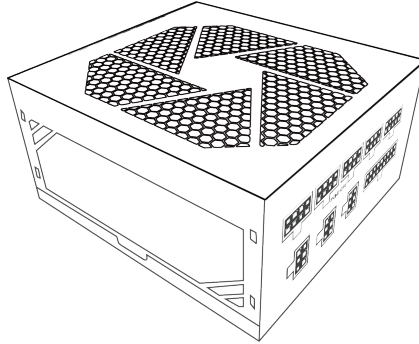
1. Please read and follow all the information contained in these instructions carefully prior to installation. The power supply is only guaranteed to function properly if the instructions are followed thus providing you with maximum satisfaction with this product.
2. Do not unplug the AC power cord when the power supply is in use. This may damage your components.
3. Do not place the power supply in high humidity or temperature environment.
4. The power supply should be powered by the source indicated on the rating label.
5. Please use only genuine REDRAGON modular cables with REDRAGON Cable Management power supply models. Third-party cables (e.g. cables of older power supply unit series) might not be compatible and could cause serious damage to your system and power supply. The warranty is voided with the use of third-party cables.
6. All warranty and guarantees will be voided, if failure to comply with any of the warnings and cautions covered in this manual.
7. High voltages exist in the power supply. Do not open the power supply case unless you are an authorized service technician or electrician. This may void the warranty. The electronic components inside the case generate a high voltage that is dangerous to humans. Even after disconnecting the power supply from the network, some parts still have high voltages. For this reason, a power supply adapter should only be opened by an authorized technician.
8. Never handle the power supply with wet or damp hands when in operation.
9. Never insert objects into the power supply's apertures/fans.
10. Note that the power supply is designed for use indoors in conditions without high levels of moisture in the ambient air. Using the power supply outdoors will lead to serious damage.
11. Never work on the power supply while it is connected to the mains. In this case, always set the power switch to "0" and if necessary, disconnect the power plug.

12. In the event of a short circuit in the device, unplug the mains cable and do not use the device. Make sure that your PC is not located directly next to a heating system or any other source of heat.
13. Opening the device voids your warranty.
14. Need help with parts, assembly, technical support, or warranty?
 Please contact us: cs@redragonzone.com
 For more technical support and product info,
 please visit: www.redragonzone.com

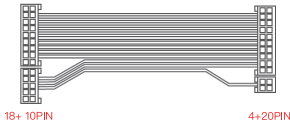
Safety Certificate

	<p>cTUVus approval for the North American Market. Compliance with the Canadian national standards adopted by the Standards Council of Canada (SCC) and US national standards.</p>
	<p>The CB Scheme is an international program for exchange and acceptance of product safety test results among participating laboratories and certification organizations around the world.</p>
	<p>The FCC mark is a voluntary mark employed on electronic products manufactured or sold in the United States which indicates that the electromagnetic radiation from the device is below the limits specified by the Federal Communications Commission.</p>
	<p>The CE mark means that the manufacturer takes responsibility for the compliance of a product with all applicable European health, safety, performance and environmental requirements.</p>
	<p>RoHS (Reduction of Hazardous Substances) is to reduce the environmental effect and health impact of electronics. The legislation's primary purpose is to make electronics manufacturing safer at every stage of an electronic device's life cycle.</p>

What's in the Box



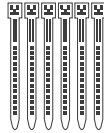
PSU x 1



18+ 10PIN

4+20PIN

24Pin x 1



Cable ties x 6



Screws x 4



Power cable x 1



8PIN

6+2PIN

6+2PIN

8PIN (6+2)&(6+2) x 2

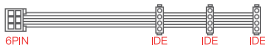


8PIN

4 + 4PIN

8Pin (4+4) x 2

650W 8Pin(4+4) x1



6PIN

IDE

IDE

IDE

IDE x 1



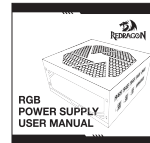
6PIN

SATA

SATA

SATA

SATA x 2



User manual x 1

FCC Statement

Changes or modifications not expressly approved by the party responsible for compliance could void the user's authority to operate the equipment.

This equipment has been tested and found to comply with the limits for a Class B digital device, pursuant to Part 15 of the FCC Rules. These limits are designed to provide reasonable protection against harmful interference in a residential installation. This equipment generates uses and can radiate radio frequency energy and, if not installed and used in accordance with the instructions, may cause harmful interference to radio communications. However, there is no guarantee that interference will not occur in a particular installation. If this equipment does cause harmful interference to radio or television reception, which can be determined by turning the equipment off and on, the user is encouraged to try to correct the interference by one or more of the following measures:

- Reorient or relocate the receiving antenna.
- Increase the separation between the equipment and receiver.
- Connect the equipment into an outlet on a circuit different from that to which the receiver is connected.
- Consult the dealer or an experienced radio/TV technician for help.

This device complies with part 15 of the FCC rules. Operation is subject to the following two conditions (1) this device may not cause harmful interference, and (2) this device must accept any interference received, including interference that may cause undesired operation.

Warranty

36 Months Warranty

Per the terms and conditions of this limited warranty as given below, warrants its new products to be free of defects resulting from faulty materials and faulty manufacturing for the length of the warranty period.

I.APPLICABILITY

This non-transferable warranty is applicable to newly purchased, previously unopened REDRAGON! Proof of purchase is required for warranty service, so should be retained.

II.WARRANTY PERIOD

For eligible products, parts and labor are warranted for the applicable warranty period from the date of purchase. The applicable warranty period varies by product model, and is identified in your user documentation, on the product package, or as listed below. Should any of these warranty periods differ, the longest specified warranty period will apply.

III.EXCLUSIONS

The following are not covered by the warranty:

1. Normal wear and tear.
2. Any product which has been modified without permission from REDRAGON! Or on which the serial Number or warranty sticker has been defaced, modified, or removed.
3. Damage, deterioration or malfunction resulting from:
 - Accident, abuse, misuse or improper use, neglect, connection to an improper voltage source, Unauthorized product modification, or failure to follow instructions included with the product.
 - Fire, water, lightning, or other acts of nature.
 - Repair or attempted repair by anyone not authorized by REDRAGON!
 - Shipping or transport damage (claims must be made with the carrier).
 - Any other cause which does not relate to a defect in materials or manufacturing workmanship.

4. Cartons, cases, batteries, cabinets, tapes, accessories or other consumables used with this product.
5. Does not warrant that this product will meet your requirements. It is your responsibility to determine the Suitability of this product for your purpose.
6. Removal or installation charges.
7. Shipping charges.
8. Any incidental charges.

IV. EXCLUSION OF DAMAGES

REDRAGON's sole obligation and liability under this warranty is limited to the repair of a defective product at its option. REDRAGON shall not, in any event, be liable for any special, incidental, indirect, or consequential damages whatsoever, including but not limited to loss of profits, revenue, or data (whether direct or indirect), damages resulting from interruption of service and loss of business, or for liability in tort relating to this product or resulting from its use or possession, even if REDRAGON, has been advised previously of the possibility of such damages.

V. LIMITATIONS OF IMPLIED WARRANTIES

There are no other warranties, expressed or implied, including but not limited to those of merchantability or fitness for a particular purpose. The duration of implied warranties is limited to the warranty length specified in Paragraph II.

VI. LOCAL LAW AND YOUR WARRANTY

This warranty gives you specific legal rights. You may also have other rights granted under local law. These rights may vary.

VII. NO OTHER WARRANTY

REDRAGON, employee, dealer, or other agent is authorized to make any modification, extension, or addition to this warranty.

After-Sales Service

Need help with parts, assembly, technical support, or warranty?

Please contact us: cs@redragonzone.com

For more technical support and product info,
please visit: www.redragonzone.com

